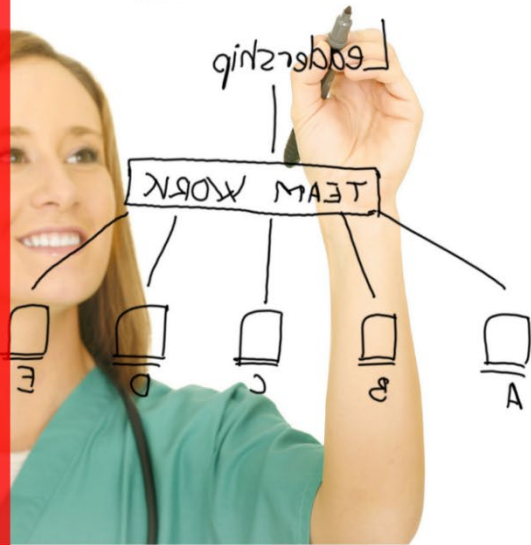


**LONG-TERM
CARE
NURSING
LEADERSHIP
COURSE
2021**



WI Director of
Nursing Council



**VIRTUAL
COURSE
BEGINNING
MAY 20TH**

MISSION STATEMENT

The Wisconsin Director of Nursing Council provides education and support for Long Term Care Professionals as they enhance the quality of life for residents and staff across the Continuum of Care.

VISION: OUR PROMISE TO NURSING

Wisconsin Director of Nursing Council



RAVE

RESOURCE ADVOCATE VOICE EDUCATE
for Long-Term Care Nursing

GET IN TOUCH

877-366-1144
www.WI-DON-Council.org

1366 E. Sumner St. PMB200
Hartford, WI 53027
Melissa@WI-DON-Council.org

WHO SHOULD ATTEND

This course is intended for Directors of Nursing, Asst. Directors of Nursing, Nurse Managers, and Supervisors-working in long-term care, including skilled nursing and assisted living settings.

WHO WE ARE

The Wisconsin Director of Nursing Council is a state association for clinical leaders in all areas of long-term care and post-acute care continuum.

Our Mission

The Wisconsin Director of Nursing Council provides education and support for Long Term Care Professionals as they enhance the quality of life for residents and staff across the continuum of care.

Our Vision

Our promise is to R.A.V.E. for nursing leadership in the long-term care continuum.

Resource | Advocate | Voice | Educate

Our Board of Directors

The Wisconsin Director of Nursing Council is a volunteer board of active Nurse Leaders.

Mindy Meehean BSN, DNS-CT – President

Kari Cook RN – Vice President

Julie Spottek RN* – Treasurer

Nancy Foss BSN, NHA, DNS-CT* - Secretary

Anilisa McDonald BSN, DNS-CT *

Dena Graff MASL, BSN, RN, DNS-CT

Emily Alessi RN, DNS-CT *

Janese Rix RN, WCC

Sharon Weddel RN, DNS-CT

Patty Emberson RN, DNS-CT

Jill Scutkowski RN, DNS-CT

Lori Koepfel BSN, RN, NHA, DNS-CT, WCC – Executive Director

Joey Pettis BSN, RN, WCC – Executive Director Emeritus

The role of nursing leader within skilled nursing and assisted living settings requires specialized skills, knowledge, and mindset. This leadership course was designed to enhance nursing leadership confidence and competence by providing tools, overviews, and resources by content experts.

The purpose of this program is to meet the challenges of long-term care as they arise with strategies to excel during surveys using tested best practices. Apply a team approach to quality improvement that honors resident preferences and leverages staff skills. Protect your residents with risk-management plans that adhere to current compliance stands. Prevent burn-out and minimize facility turnover by promoting communication and participation. Comply with human resource regulations, laws, and challenges no matter the situation.

The WI DON Council has brought together individuals who are experts in the field. The Long-Term Care Leadership Course provides the base knowledge to manage and lead the three key concepts Nurse Leadership, Clinical Practice/Compliance, Budget Management.

Leadership: Leadership skills are essential to the successful management of staff, clinical situation, and system implementation.

Clinical Practice/Compliance: Clinical skills are refined and mastered during this formal education process.

Budget management: Fiscal responsibility is the only way each of our facilities can survive in the cost-conscious environment. This course will provide tools and knowledge concerning reimbursement, staffing, and supply/inventory costs.

Updates to the Long-Term Care Nursing Course include the addition of regulations related to the oversight of assisted living facilities.-Offering the LTC Course virtually will allow leaders to implement the lessons learned in the live and pre-recorded learning sessions and discuss barriers and success during our Group Networking Recap webinar.

COURSE AGENDA

The Long-Term Care Nursing Leadership Course combines one 90-minute live session and two 60 to 90 minutes pre-recorded sessions each week for eight weeks. We have reworked our live three-day courses to a virtual format to meet busy leaders' needs while maintaining the live networking that's essential to learning.

- ❖ ABC's of Nursing Leadership
- ❖ Human Resource Management
- ❖ Leading a Diverse Team and Resident care
- ❖ Managing an Infection Prevention and Control Program in Your Healthcare Setting
- ❖ Survey Preparedness and Regulation Review Investigation and Reporting in NH and AL Settings
- ❖ MDS and Reimbursement Management for the Nurse Leader
- ❖ Clinical Best Practice Regulatory Compliance, and Surveillance Systems
- ❖ QAPI / Quality Measures and Implementing 5-Star Quality Rating System
- ❖ Transitions of Care
- ❖ Keeping it all Together

Course Presenters**

- ❖ Emily Alessi RN, DNS-CT
- ❖ Path Boyer MSM, RN, NHA
- ❖ Maria Benny-Fitzpatrick DNP, RN, FNP, GNP
- ❖ Lisa Gervais RN, NHA
- ❖ Lori Koeppel BSN, RN, NHA, WCC, DNS-CT
- ❖ Joey Pettis BSN, RN, WCC, DNS-MT
- ❖ Tina Schrader-Berte
- ❖ Julie Spottek RN
- ❖ Colleen Tasch BSN, NHA
- ❖ Robin Wolzenburg BSN, RN

ATTENDEE INFORMATION

Registration

Register online at www.WI-DON-Council.org/LTCNursingCourse to register online or print the mail-in registration form.

Cost

Member fee is \$599 / Non-Member \$699 for the LTC Nursing Leadership Course. Due before the course begins May 14th. Late registration after May 14th is \$649 for members / \$749 non-members. Registration is non-refundable. The course registration is for an individual and, once started, can not be refunded or substituted.

Frequently Asked Questions

Our FAQ is at www.WI-DON-Council.org/LTCNursingCourse. It is updated as needed.

Attendance

This course, while virtual, is an online course that requires attendance during our once-a-week live session on **Thursdays starting May 20th**. Each week attendees will also watch two 60-minute pre-recorded webinars. Pre-recorded sessions are released on Thursdays for the following week. There are four live Touch Base zoom meetings starting **June 4th**. At this time, the course is not an OnDemand course. The course is over an 8-week training window and needs to be completed by July 31st, 2021.

Live training is recorded and placed in our online Learning Management System to access. The pre-recorded sessions are viewable in our Online Learning Management System.

Handouts and Resources

Attendees will receive a Welcome Binder in the mail containing basic material to start with the Virtual Long-Term Care Nursing Leadership Course. Resources, tools, handouts, and power points will be available to download or print from our Online Learning Management System. For us to ensure its accuracy, please print all material by July 31st, 2021.

Certificate of Completion

Attendees who complete all the modules will receive a certificate of completion. At this time, we can not offer a credential for the course. We are pursuing this option for the future. See the online FAQ for more details.

Substitutions

Substitutions must be made BEFORE the start of the course on May 20th, 2021. Please contact via email at melissa@wi-don-council.org with the first and last name, title, and facility/company of both you and your substitute.

Hold Harmless & Disclosure of waiver of Liability

Please read the full waiver on our website or in your course binder. By attending this course, you hereby waive any and all claims against WDONC and its employees. We reserve the right to add, move, substitute, or remove course presenters, topics, and sessions. ** Additional course presenters will be added.

*** Education Committee**

Lori Koeppel BSN, NHA– Executive Director

Julie Spottek RN – Chair

Nancy Foss BSN, NHA, DNS-CT

Anilisa McDonald BSN, DNS-CT

Emily Alessi RN, DNS-CT

Long-Term Care Nursing Leadership Course 2021

Mail-In Registration

(Our preferred method of registration is to register online at www.WI-DON-Council.org and pay with a credit card)

Facility Name

Facility Address City - State - Zip

Attendee Name (Please print all information legibly)

Attendee Title (Please print all information legibly)

Home Address City – State - Zip (to mail certification information)

Attendee Cell Phone*

Attendee E-Mail*

* Used for communication and important announcements.

Complete form and submit along with fees:

WI DON Council, 1366 E. Sumner St. PMB200 Hartford, WI 53027

_____ WDONC Member \$599 ea. / \$649 if paid after May 14th.

_____ Non-Member \$699 / \$749 if paid after May 14th.

Add a membership:

_____ Professional Membership \$75 for individual

_____ Facility Membership \$125 for all staff in nursing center

_____ Corporate Membership – 3 or more centers – call for details.

Make checks or money order payable to:

WI Director of Nursing Council – Education Forum, Inc.

Memo: LTC Nursing Leadership Course

1366 E. Sumner St. PMB 200 Hartford, WI 53027

877-366-1144 ext. 1



WI Director of
Nursing Council

1366 E. Sumner St. PMB 200
Hartford, WI 53027

Please return to sender.

**LONG-TERM CARE NURSING
LEADERSHIP COURSE
INFORMATION ENCLOSED.
DEADLINE MAY 14TH.**